

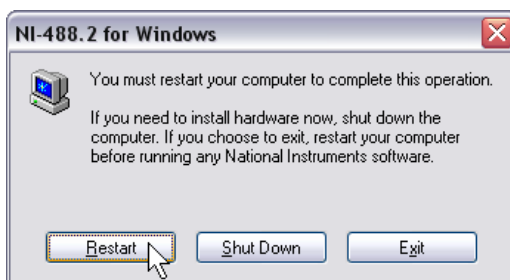
External Controllers (Ethernet, USB, ExpressCard™, PCMCIA)

1. Insert the NI-488.2 CD and choose **Install NI-488.2**.

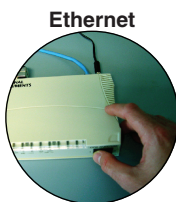


Tip The **View Documentation** link provides access to NI-488.2 documentation, including detailed hardware installation instructions.

2. When you have completed the software installation, **restart** the computer.



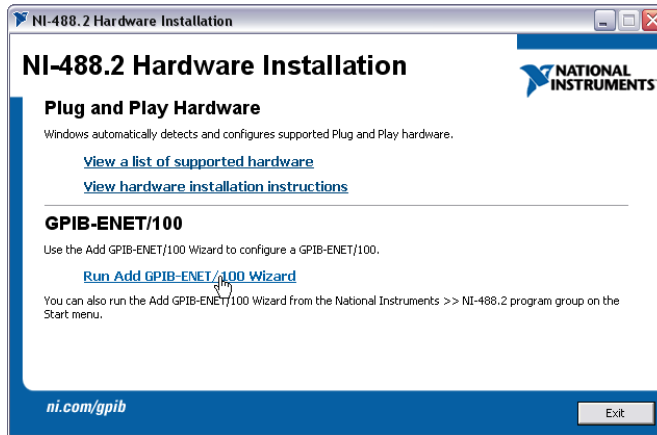
3. Install your GPIB hardware.



Caution The GPIB devices and the computer must share the same ground potential.

4. Ethernet Only

After the computer has restarted, run the Add GPIB-ENET/100 Wizard from the NI-488.2 Hardware Installation program.



You can also run the Add GPIB-ENET/100 Wizard from the **National Instruments»NI-488.2** program group in the **Start** menu.

5. Ethernet Only

Complete the Add GPIB-ENET/100 Wizard to configure your Ethernet interface.

