

# High-Speed USB2.0 PCI Card



### Introduction

Instantly add USB peripherals to your PC. The USB Port (Universal Serial Bus) allows you to instantly connect USB devices to your computer. The USB Port allow you to attach 2/3/4 USB devices instantly. You don't have to worry about running out of slots in your computer or those confusing IRQ's again. With USB Hot-Swapping function, you don't have to power down your PC to install hardware again. Welcome to the USB Revolution-Make it Simple and Easy.

### Features

1. Support 32-bit PCI bus
2. Fully compliant with USB 2.0 & 1.1 devices
3. High quality ALi chipset for better performance
4. Supports Plug-n-Play & Hot-Swapping
5. Support to connect up to 127 USB devices
6. Data transfer-rate 1.5/12/480 Mbps
7. Fully supports EHCI and OHCI Compliant standards
8. Driver free for Microsoft Windows 2000 SP4 & XP

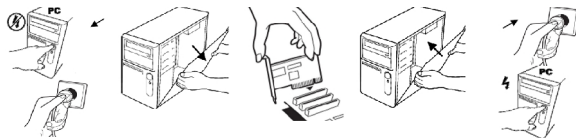
### System Requirement

1. CPU Pentium II or above
2. With PCI 32bit slot
3. CD-ROM to install driver
4. Support Windows 98SE/ME/2000/XP & MAC OS 10.2.X

### Hardware Installation

Follow the instruction given below to install the USB 2.0 PCI Card

1. Turn your computer off
2. Remove the power plug from the plug socket.
3. Remove the cover from the computer case.
4. If fitted. Remove the metal cover plate on the rear of a free PCI slot (White).
5. Insert the USB 2.0 PCI card into the free PCI slot and screw it firmly on the bracket side.
6. Place the cover back onto the computer.
7. Insert the plug into the plug socket.



### Driver installation

#### • Windows XP SP1 & Windows 2000 SP4

The system will automatically detect USB 2.0 device and install by itself under Windows XP Service Pack 1 & Windows 2000 Service Pack 4 .

#### • Windows XP & Windows 2000

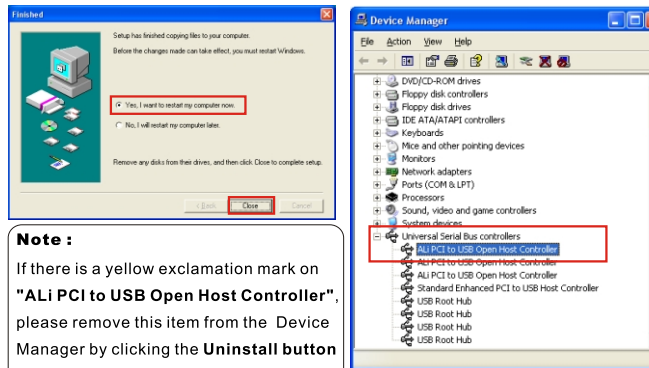
1. Please make sure this PCI card has been plugged into the PCI slot.
2. Insert the CD driver into the CD-ROM drive and run the "Setup.exe" program  
Located within folder of the Driver CD :

: \USB\USB2.0-ALi\Windows\Setup.exe



3. Then this Setup program will install the driver automatically. After installing driver Successfully, press "Close" to finish driver installation procedure and Reboot the system.
4. After restarting , open the Device Manager and check if the devices can work properly

Start > Controller Panel > System > Hardware > Device Manager



#### Note :

If there is a yellow exclamation mark on "ALi PCI to USB Open Host Controller", please remove this item from the Device Manager by clicking the **Uninstall** button and click **Refresh** to re-install this driver again.

#### • Windows 98 SE/ME

1. Please make sure this PCI card has been plugged into the PCI slot.
2. Insert the CD driver into the CD-ROM drive and run the "Setup.exe" program  
Located within folder of the Driver CD :

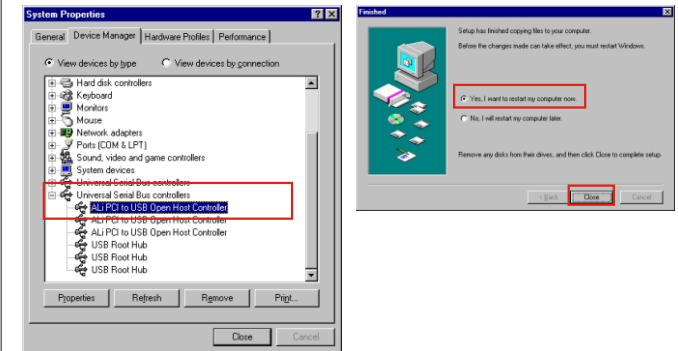
: \USB\USB2.0-ALi\Windows\Setup.exe



3. Then this Setup program will install the driver automatically. After installing driver Successfully, press "Close" to finish driver installation procedure and Reboot the system.

4. After restarting , open the Device Manager and check if the devices can work properly.

Start > Controller Panel > System > Device Manager



#### Note :

In Windows ME, the green question mark on "ALi to USB Open Host Controller" item is a "normal" message. Please ignore it.

#### • MAC OS 10.2.X

1. Please make sure this PCI card has been plugged into the PCI slot.
2. Insert the CD driver into the CD-ROM drive then click and drag the "USB2EHCI\_v108.img" to the Desktop. The file is located within folder of the Driver CD :  
 \USB\USB2.0-ALi\MAC10\_2\_X\USB2EHCI\_v108.img
3. From the Desktop, click and drag the "USB2EHCI\_v108.img" file to your "Stuffit Expander" Icon on the bottom Taskbar of the Desktop.
4. A new Icon will be created on the Desktop labeled USB2EHCI\_v108  
Double click on it. A Dialog box will appear labeled as USB2EHCI\_v108. This is the "Package Installer" Icon. Double click on it.
5. A message will appear stating "The installer requires that you type your password. If you have not set a password, then click on the OK Button.
6. The "Install USB2.0 EHCI Support v.108" dialog box will appear. Click The "Continue" button.
7. The "Select a Destination" dialog box will appear . Your hard drive should be listed there. Click on it to highlight the hard drive and then click the "Continue" Button.
8. The "Easy Install" dialog box will appear. Click on the "Upgrade" button.
9. A dialog box will appear stating, " Installing this software requires you to restart your computer when the installation is done". Click on the "Continue Installation" button.
10. Click on the "Restart" button to complete the installation and restart your computer.